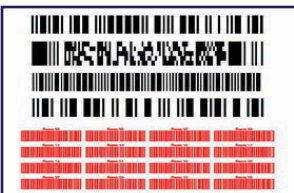




# Layout, Design, Output, and Convert



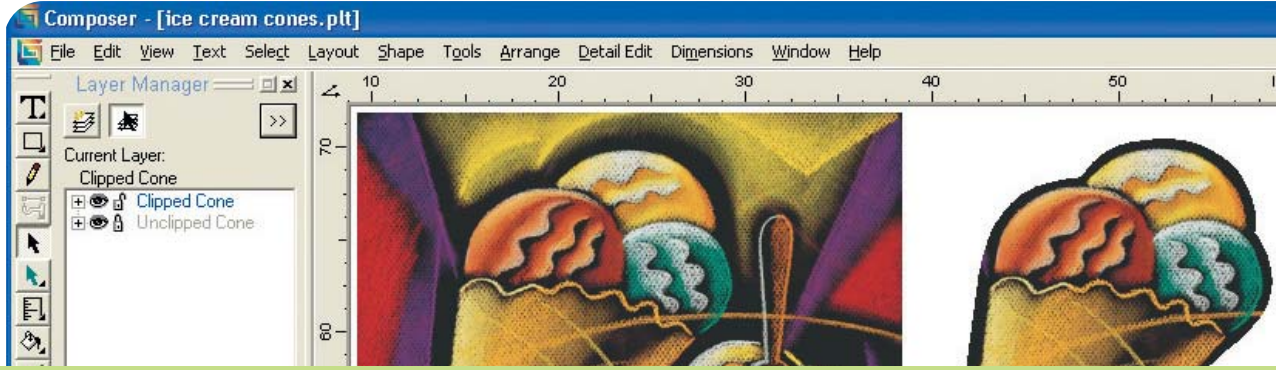
## Gerber OMEGA Software

The software powerhouse that has the capability to enable a beginner and propel the expert.

NEW FEATURES AND  
ENHANCEMENTS

NEW TEXT AND  
LANGUAGE TOOLS

NEW MENUS AND  
FUNCTIONS



## GERBER OMEGA™ Software

Building a complete print-to-cut or cut vinyl solution begins with the right software. Gerber OMEGA design and output software is a complete suite of layout, design, output and conversion tools created specifically for use in the sign industry. OMEGA capabilities allow you to create sophisticated, technical or advanced layouts while maintaining a simple and consistent operation. OMEGA design and output tools are fine-tuned to accommodate vinyl cutting, printing, and routing on sign-industry production devices such as Gerber vinyl cutters and the GERBER EDGE® family of thermal transfer printers. OMEGA is intuitive, versatile, and easy to use - a software powerhouse that has the capability to enable a beginner and propel the expert.



### Features included in OMEGA 4.0:

#### PRODUCTIVITY FEATURES:

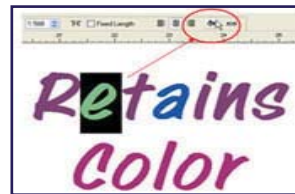
- **EDGE FX™ HiRez mode**
  - 1200 x 300 dpi printing
  - Better output quality
- **ART Path™ automatic nesting**
- **Easier and faster Backcut/Liner-Cut decals**
- **Faster rendering of AutoText/AutoNumber**
- **Improved barcode layout tools**
- **“Smart Start Point” plotting**
  - Reduces tool movement between shapes

#### WORKFLOW FEATURES:

- **Auto Halftones for EDGE® Printing**
  - Creates smaller dots
  - Reduces banding
- **Auto “Strokes for Chokes” button**
- **Choke/Spread top color designation**
- **Foil Adjust Integration**
  - Manually adjust foils by pixel
- **More Undo’s and “Undo after saving”**
- **Plotter grid-cut or butt-cut border output**
- **Support for more friction-fed plotters**

## GERBER OMEGA 4.0

OMEGA 4.0 builds on the design capabilities of previous OMEGA releases by adding productivity features for all types of output devices. This latest release of OMEGA is packed with output features for vinyl cutting, routing, GERBER EDGE series thermal transfer printing, and inkjet workflow improvements. Many existing functions have also been enhanced to improve output quality, save file preparation time, quicker output to various devices, and to automatically leverage existing features to help users optimize their production.



# GERBER OMEGA SOFTWARE

## ORDERING and SYSTEM INFORMATION

- TrueType® Font Converter enables TrueType fonts as cuttable or printable Gerber fonts
- Font Manager helps keep track of Gerber fonts
- Font Designer enables the creation of vector fonts
- Gerber ColorID™ compares and matches colors
- Gerber Thumbprint maintains Gerber PLT files
- GSP File Converter and Vantage Scan II Raster to Vector programs convert multiple files from one format to another while unattended

### System Requirements

- **OS**
  - Windows® 7, Windows Vista and Windows XP Pro - SP2 or higher
  - 32 bit systems are required for the EDGE/EDGE 2 because the required *EDGE ECP Parallel port is not supported in 64 bit systems*
  - OMEGA 4.0 will not load on Windows 2000, 98 or ME

Minimum hardware requirements are dictated by the operating system used
- **Processor**
  - Intel Pentium IV™ or higher
- **Memory**
  - 2 GB or more recommended
- **Hard Disk Space**
  - 20 GB available disk space min (40+ GB recommended)
- **Monitor**
  - 1024 x 728 min resolution and support of 16 million colors
- **Drives**
  - **DVD-ROM:** Required
  - **3.5" Floppy:** For use with Legacy options, fonts, etc..
- **Ports**
  - **USB:** At least 2 free required
  - **Ethernet:** For use with Gerber EDGE FX and other network connections
  - **Serial (9-pin):** For use with Gerber plotters and/or routers
  - **Parallel (25-pin):** For use with the EDGE or paper printer
  - **ECP Parallel (25-pin):** For use with EDGE 2 (USB option)

NEW SEATS - OMEGA™ 4.0	
OMEGA CP (CP = Cut/Print)	P83004A
OMEGA CP MIP (MIP = Multiple Installation Program)	P83033A
OMEGA CP NFR (NFR = Not For Resale) <u>Distributor Only</u>	P83021A
OMEGA CS (CS = Cut Solution)	P83017A
OMEGA CS MIP (Multiple Installation Program)	P83038A
OMEGA LS (LS = Layout System - <u>No</u> Output)	P83025A
OMEGA PS w/ ART Path (PS = Plot Station - Output <u>Only</u> )	P83029A
OMEGA 3.0 to 4.0 UPGRADES	
OMEGA 3.0x to OMEGA 4.0 UPGRADE (Password and DVD kit)	P83046A
OMEGA 3.0x to OMEGA 4.0 UPGRADE - <u>GerberNet</u> Version	P83049A
OMEGA 3.0 Layout Station, ImageRIP, PlotStation & EdgeRIP SA to OMEGA 4.0 UPGRADE (This makes the system OMEGA 4.0, but keeps the functionality at LS, IR, PS, and ER)	P83045A
OMEGA 3.0 Layout Station, ImageRIP, PlotStation & EdgeRIP SA to OMEGA 4.0 <u>CP</u> UPGRADE (Includes a 3.0 to 4.0 upgrade and an upgrade to full OMEGA CP)	P83036A
OMEGA 1.5x to 4.0 UPGRADES	
OMEGA 1.5x <u>CP</u> to OMEGA 4.0 CP UPGRADE (Factory Serialized) - New key serialized at GSP	P83034A
OMEGA 1.5x <u>CS</u> to OMEGA 4.0 CS UPGRADE (Factory Serialized) - New key serialized at GSP	P83039A
OMEGA 1.5x <u>CL</u> to OMEGA 4.0 CS UPGRADE (Factory Serialized) - New key serialized at GSP (1.5 CL customers automatically get an upgrade to 4.0 CS)	P83039A
OMEGA 1.5x ImageRIP, PlotStation and EdgeRIP Stand Alone to OMEGA 4.0 UPGRADE	Call for Part #
OMEGA 2.0x/2.1 to 4.0 UPGRADES	
OMEGA 2.0x to OMEGA 4.0 UPGRADE (Password and DVD kit)	P83041A
OMEGA 2.0x to OMEGA 4.0 UPGRADE - <u>GerberNET</u> Version	P83047A
OMEGA 2.0x ImageRIP, PlotStation and EdgeRIP Design Station to OMEGA 4.0 UPGRADE	Call for Part #
OMEGA 2.5x/2.6x to 4.0 UPGRADES	
OMEGA 2.5x/2.6x to OMEGA 4.0 UPGRADE (Password and DVD kit)	P83043A
OMEGA 2.5x/2.6x to OMEGA 4.0 UPGRADE - <u>GerberNET</u> Version	P83048A
OMEGA 2.5x/2.6x Layout Station, ImageRIP, PlotStation, and EdgeRIP SA to OMEGA 4.0 UPGRADE	P83044A
OMEGA 2.5x/2.6x Layout Station, ImageRIP, PlotStation, and EdgeRIP SA to OMEGA 4.0 <u>CP</u> UPGRADE (Includes a 2.5 to 4.0 upgrade and an upgrade to full OMEGA CP)	P83035A
OPTIONS	
OMEGA AutoCarve - Option (Password <u>Only</u> - Sample bit is not included)	P82403A
GERBER EDGE/EDGE 2 USB Cable Option	P79330A
OTHER	
GA to OMEGA 4.0 UPGRADES	Call for Part #'s
OMEGA Level to Level UPGRADES	
OMEGA Font Packs (Activated using password)	

Windows is a registered trademarks of Microsoft Corp.

Intel Pentium IV is a registered trademark of Intel Corp.

TrueType is a registered trademark of Apple Computer, Inc.

Visit us at [www.gspinc.com/omega](http://www.gspinc.com/omega) for more information.

**Visit us at [www.gspinc.com/omega](http://www.gspinc.com/omega) for more information.**

- **“What’s New” Documentation**
  - **Videos & Demonstrations**
    - **Features & Benefits**
- **Electronic Brochure and Gerber Fonts**
  - **Upgrade Information**

**Contact your distributor today to see OMEGA in action.**

 **GERBER SCIENTIFIC PRODUCTS**

83 Gerber Road  
South Windsor, CT 06074  
(800) 222-7446  
(860) 644-1551  
[www.gspinc.com](http://www.gspinc.com)

©2010 Gerber Scientific Company.  
All rights reserved.